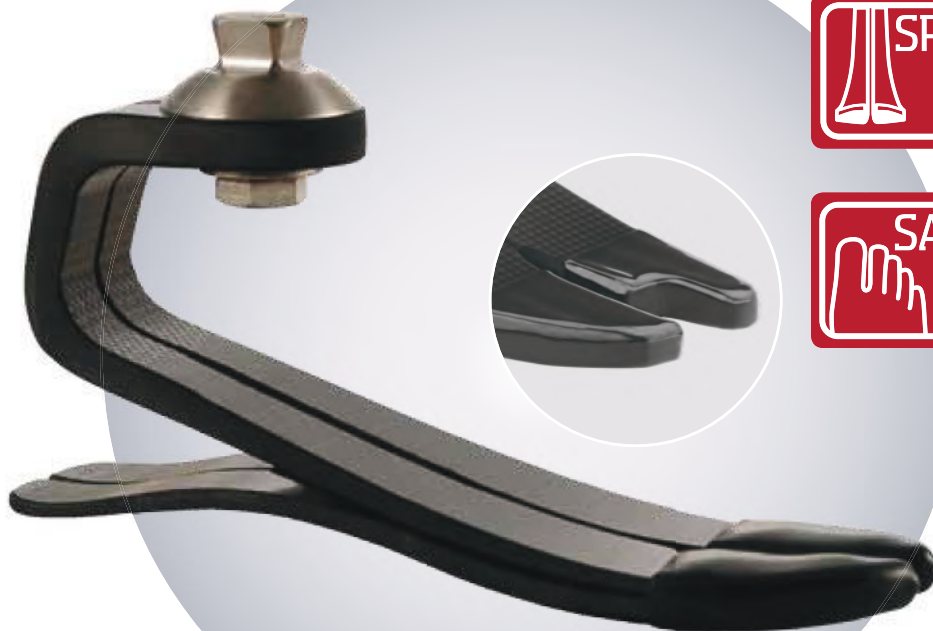


EVERYDAY

Highlander[®]

Proven technology for dependable performance

- Offers an ideal blend of stability and action, often preferred by transfemoral amputees
- Split toe provides excellent inversion/eversion
- Standard Highlander rated to 166 kg
- 36-month warranty



Split Toe

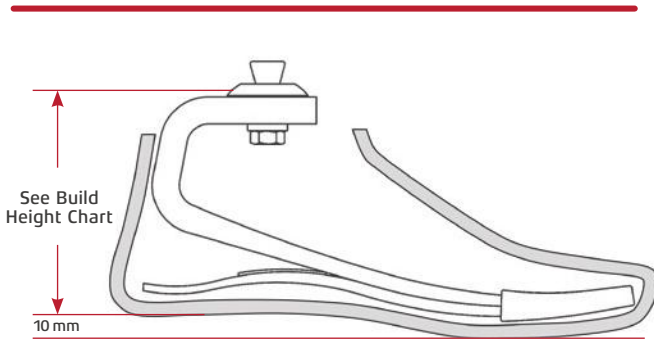
Sandal Toe

Highlander (FS3)

Highlander®



EVERYDAY



See Build Height Chart

10 mm

Note: Build height measurements represent a fully assembled unit.

Product ID: FS3

Sizes: 22-31 cm

Sandal toe available for sizes 22-28 cm*

User Weight Rating: 166 kg

Heel Height: 10 mm

Connector: Male pyramid

Warranty: Foot module 36 months,
Cosmetic foot shell 6 months

* When ordering the Sandal Toe option, please contact Customer Service for lead time.

Accessories

- Foot Shell Removal Tool: (ACC-00-103)
- Spectra Sock: (ACC-00-101xx)
30 cm, 35 cm, 40 cm
- Stiffening Bumpers:
 - 22-25 cm (KIT-00-116)
 - 26-28 cm (KIT-00-117)
 - 29-31 cm (KIT-00-118).

Note: Spectra socks and heel bumpers are included in the delivery.

Build Height & Weight

Size (cm)	Height (mm)	Weight (g)
22-25	108	470
26-28	121	590
29-31	130	750

Product weight includes foot shell. Measurements are approximate and will vary due to category selection and manufacturing variability.

Stiffness Category Selection

Impact Level			Weight (kg)
Low	Moderate	High	
1	1	2	44-52
1	2	3	53-59
2	3	4	60-68
3	4	5	69-77
4	5	6	78-88
5	6	7	89-100
6	7	8	101-116
7	8	9	117-130
8	9		131-147
9			148-166

Complete Prosthetic Foot (incl. foot shell) Part Number

FS3-00-A--

Toe: 0-regular, 1-sandal
 Category: 1-9
 Size: 22-31
 Version: M-mid profile, S-sandal toe
 Side: L-left, R-right
 Generation: 3-regular toe, 2-sandal toe
 Skin Tone: L-light, M-medium, D-dark

Foot Module Part Number

FS3-00-A-

Category: 1-9
 Size: 22-31
 Toe Configuration: RU-regular toe, universal; SR-sandal toe, right; SL-sandal toe, left

Foot Shell Part Number

FTC--4-

Generation: 2-3
 Profile: M-mid, H-high
 Cap: 0-yes, 1-no
 Size: 22-31
 Skin Tone: L-light, M-medium, D-dark
 Toe: R-regular, S-sandal
 Side: L-left, R-right

See the Cosmetic Foot Shell page for more detailed ordering instructions.